

2



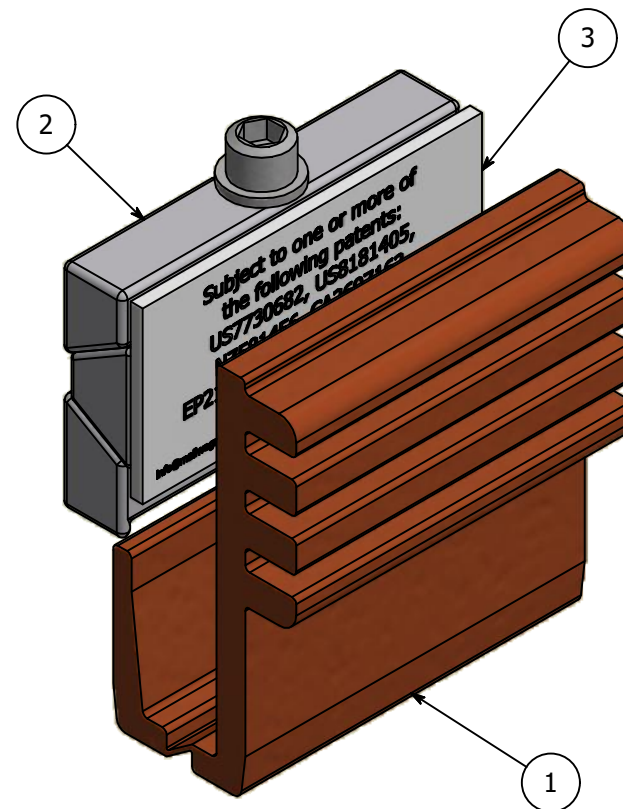
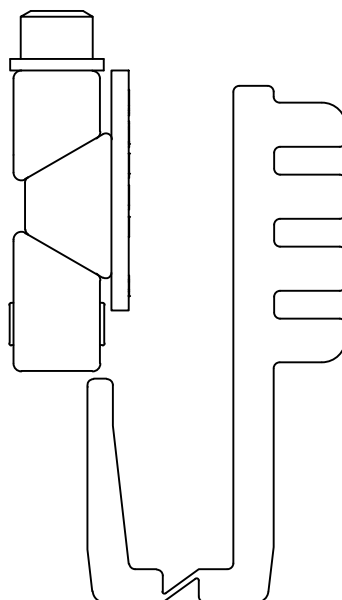
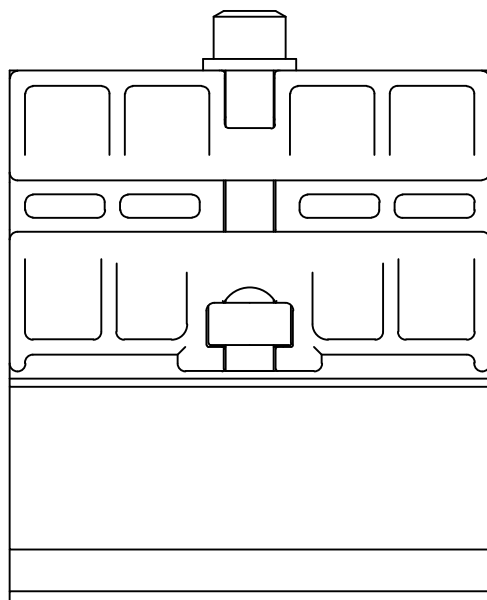
1

REVISION HISTORY

REV	DESCRIPTION	DATE
2	Changed red pad to white	11/20/2017
3	PGISO.035 Qty. 2 WAS PGISO.125 Qty. 1	12/20/2018
4	PGISO.090 Qty. 1 WAS PGISO.035 Qty. 2	2/1/2019
5	Added Sheet 2, mechanism details	3/18/2019

PARTS LIST

ITEM	QTY	PART NUMBER	DESCRIPTION
1	1	PGISO60	Brown Isolator, Plastic, Used with Panel Grip, 1/2" Glass
2	1	N/A	Panel Grip Assembly, see sheet 2
3	1	PGISO.090	Isolator HDPE White/PSA 3M 468MP One Side .090 Inch X 1.25 Inch X 2.5 Inch Printed



TOLERANCE

X.X..... = $\pm .060$
 X.XX..... = $\pm .030$
 X.XXX..... = $\pm .010$

XX°..... = $\pm 1^\circ$

UNLESS OTHERWISE NOTED

CUT LENGTH:

FINISH:

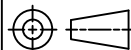
As Is

DEVELOPED LENGTH:

WEIGHT:

0.26 lbmass

TOOL NUMBER:



DESCRIPTION:

PanelGrip 2 for 1/2" Glass, Dry Mount Mechanism, w/ Brown Isolator and Red Pad

MATERIAL:

MATERIAL DESC:

DATE:

3/18/2019

DRAWN BY:

K. Bauserman

PART NUMBER:

PG2460

REV:

5



WAGNER

COLLABORATIVE METAL WORKS

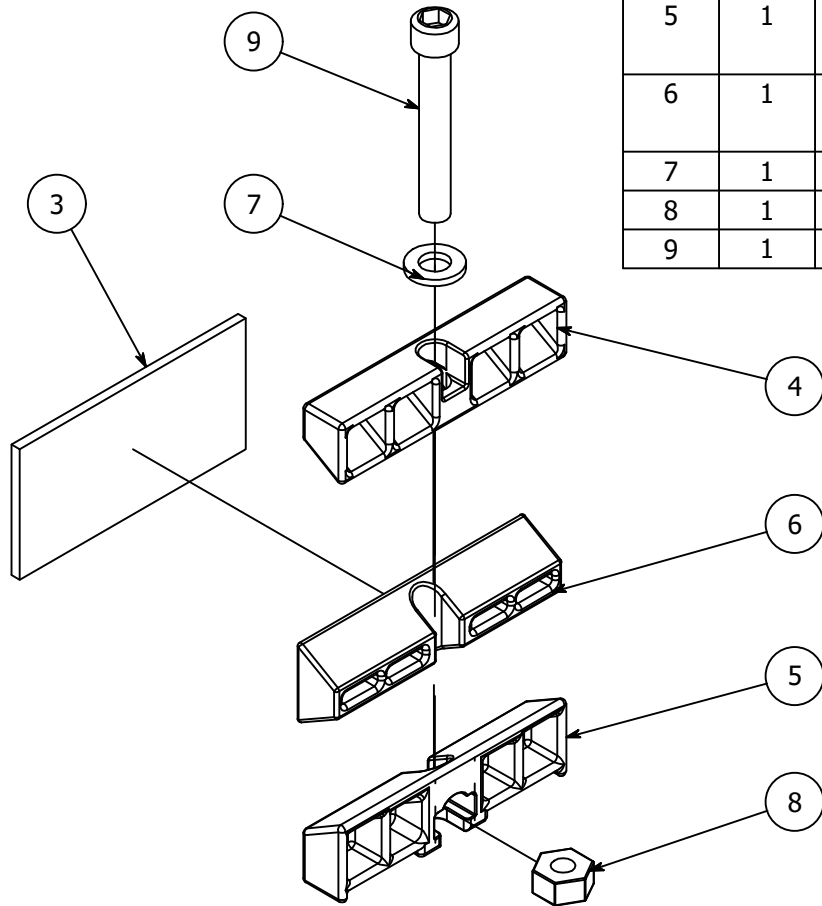
2




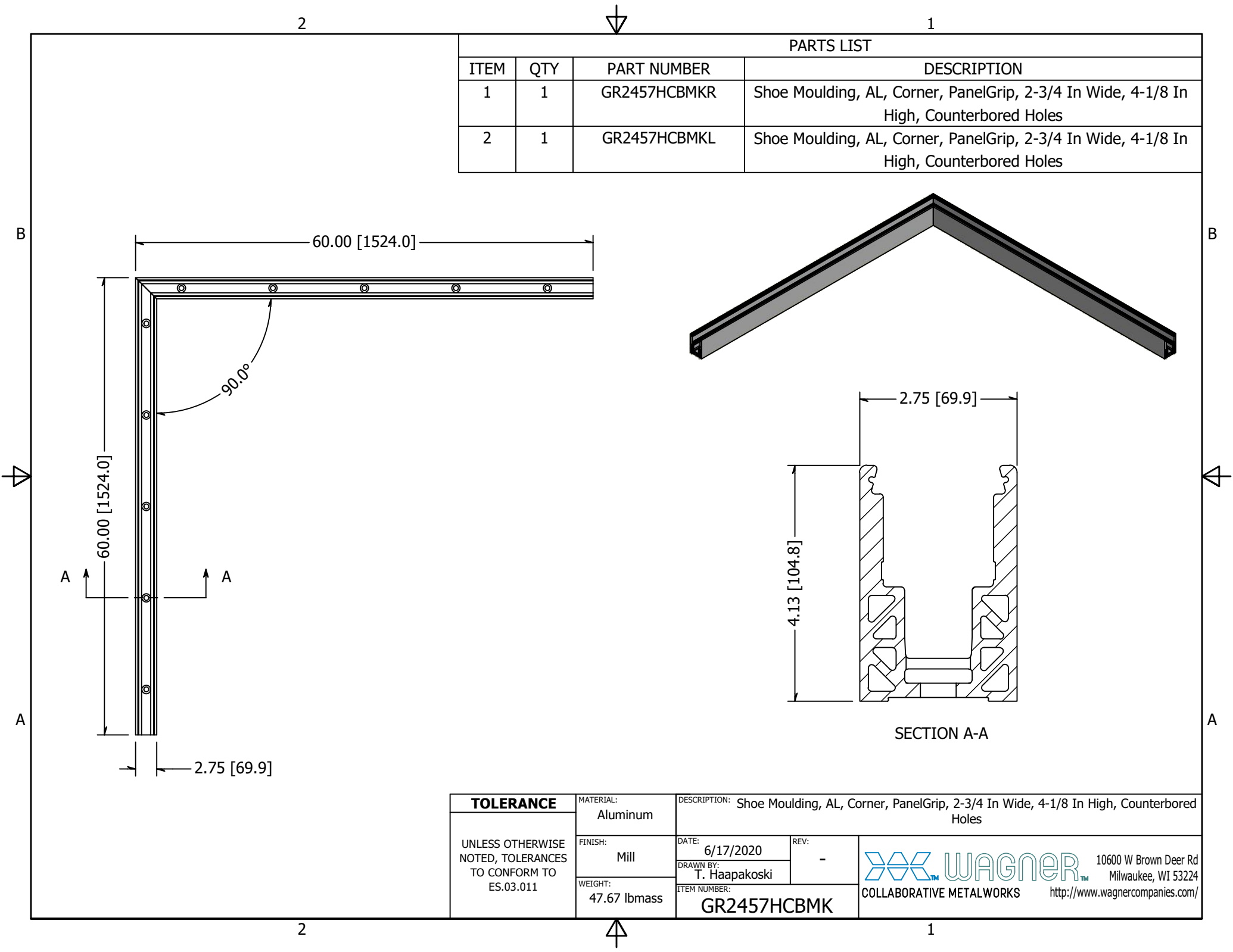
1

PANEL GRIP MECHANISM ASSEMBLY


PARTS LIST			
ITEM	QTY	PART NUMBER	DESCRIPTION
3	1	PGISO.090	Isolator HDPE White/PSA 3M 468MP One Side .090 Inch X 1.25 Inch X 2.5 Inch Printed
4	1	PG2T	PanelGrip, Zinc Aluminum, Cast, Top Block, .450" Thick, .57" High, 2.50" Long
5	1	PG2B	PanelGrip, Zinc Aluminum, Cast, Bottom Block, .450" Thick, .72" High, 2.50" Long
6	1	PG2C	PanelGrip, Zinc Aluminum, Cast, Center Block, .450" Thick, .76" High, 2.50" Long
7	1	PG2LW	Washer Lock, 1/4-20, Stainless Steel
8	1	PG2NUT	Nut, Stainless Steel, 1/4-20 FHN
9	1	SHC3N2520-0163	SCREW SS 1/4-20 X .50 SOCKET HEAD CAP

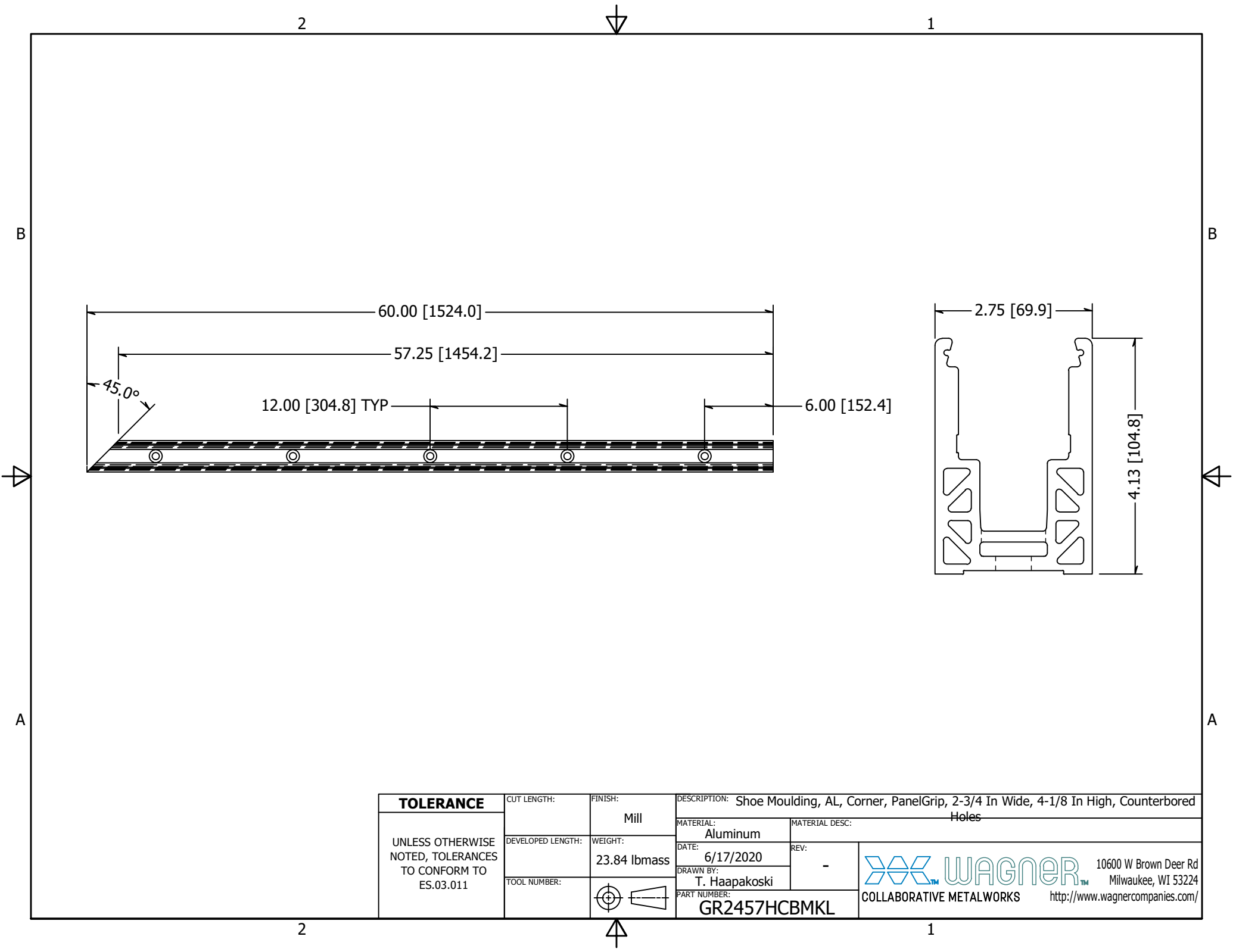


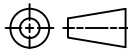

TOLERANCE		CUT LENGTH:	FINISH:	DESCRIPTION: PanelGrip 2 for 1/2" Glass, Dry Mount Mechanism, w/ Brown Isolator and Red Pad	
X.X.....	= ± .060		As Is	MATERIAL:	MATERIAL DESC:
X.XX.....	= ± .030	DEVELOPED LENGTH:	WEIGHT:	DATE: 3/18/2019	REV: 5
X.XXX.....	= ± .010		0.26 lbmass	DRAWN BY: K. Bauserman	
XX°.....	= ± 1°	TOOL NUMBER:		PART NUMBER: PG2460	
UNLESS OTHERWISE NOTED					

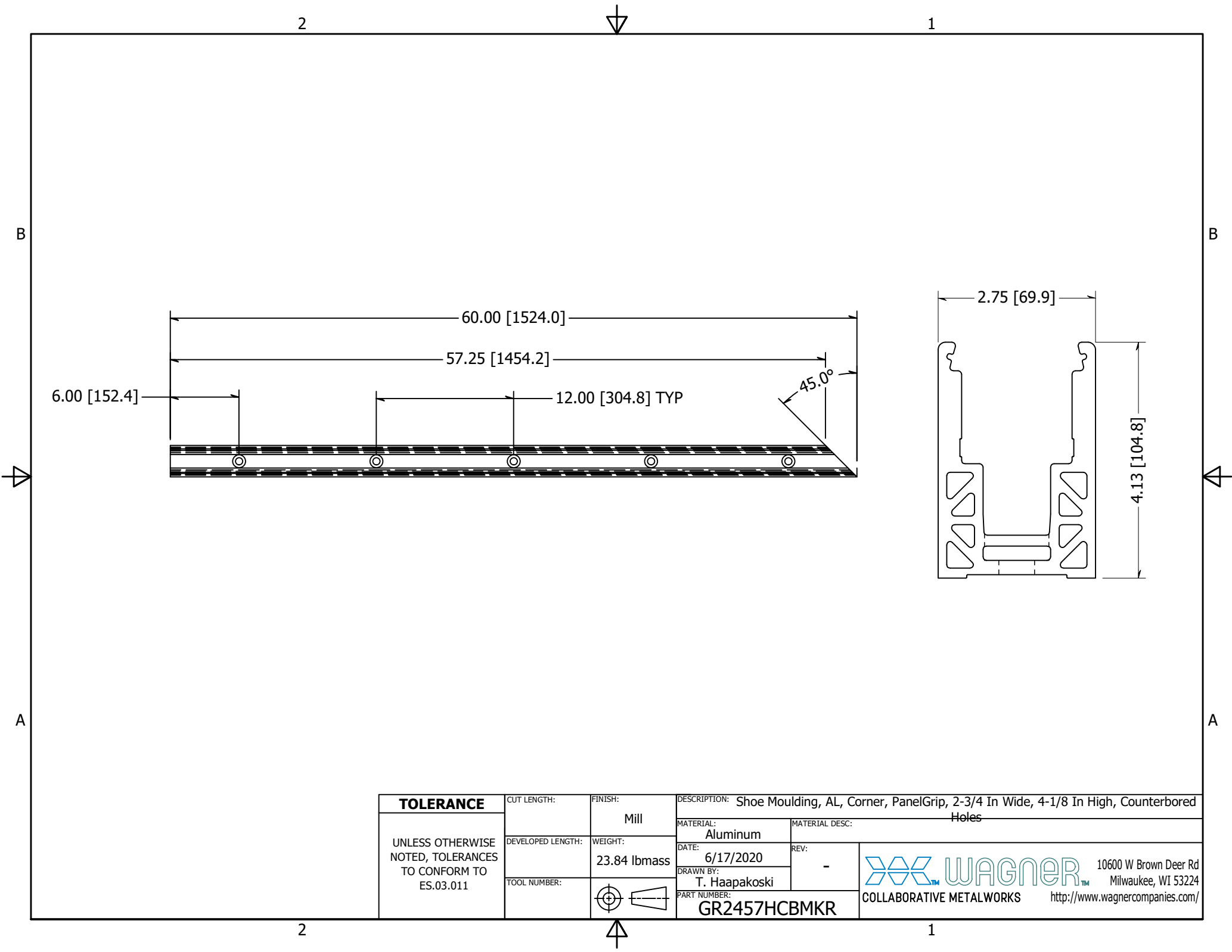




PARTS LIST			
ITEM	QTY	PART NUMBER	DESCRIPTION
1	1	GR2457HCBMKR	Shoe Moulding, AL, Corner, PanelGrip, 2-3/4 In Wide, 4-1/8 In High, Counterbored Holes
2	1	GR2457HCBMKL	Shoe Moulding, AL, Corner, PanelGrip, 2-3/4 In Wide, 4-1/8 In High, Counterbored Holes

TOLERANCE UNLESS OTHERWISE NOTED, TOLERANCES TO CONFORM TO ES.03.011	MATERIAL: Aluminum	DESCRIPTION: Shoe Moulding, AL, Corner, PanelGrip, 2-3/4 In Wide, 4-1/8 In High, Counterbored Holes	
	FINISH: Mill	DATE: 6/17/2020	REV: -
	WEIGHT: 47.67 lbmass	DRAWN BY: T. Haapakoski	 10600 W Brown Deer Rd Milwaukee, WI 53224 http://www.wagnercompanies.com/
		ITEM NUMBER: GR2457HCBMK	



UNLESS OTHERWISE NOTED, TOLERANCES TO CONFORM TO ES.03.011	CUT LENGTH:	FINISH:	DESCRIPTION: Shoe Moulding, AL, Corner, PanelGrip, 2-3/4 In Wide, 4-1/8 In High, Counterbored Holes		
		Mill	MATERIAL:	Aluminum	
	DEVELOPED LENGTH:	WEIGHT:	DATE:	6/17/2020	REV:
		23.84 lbmass	DRAWN BY:	-	
	TOOL NUMBER:		PART NUMBER:	GR2457HCBMKL	
			 10600 W Brown Deer Rd Milwaukee, WI 53224 http://www.wagnercompanies.com/		
			COLLABORATIVE METALWORKS		



UNLESS OTHERWISE NOTED, TOLERANCES TO CONFORM TO ES.03.011	CUT LENGTH:	FINISH:	DESCRIPTION: Shoe Moulding, AL, Corner, PanelGrip, 2-3/4 In Wide, 4-1/8 In High, Counterbored Holes		
		Mill	MATERIAL:	Aluminum	
	DEVELOPED LENGTH:	WEIGHT:	DATE:	6/17/2020	REV:
		23.84 lbmass	DRAWN BY:	-	
	TOOL NUMBER:		PART NUMBER:	GR2457HCBMKR	
			 10600 W Brown Deer Rd Milwaukee, WI 53224 http://www.wagnercompanies.com/		